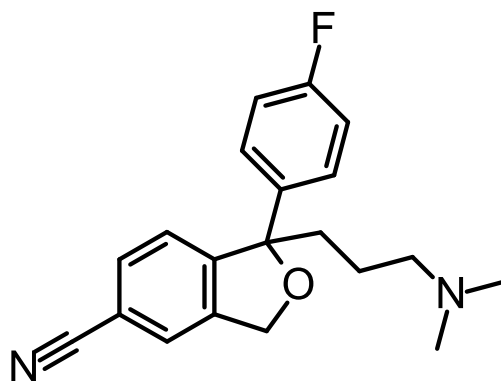


Catalog Number: **RCTT1100**

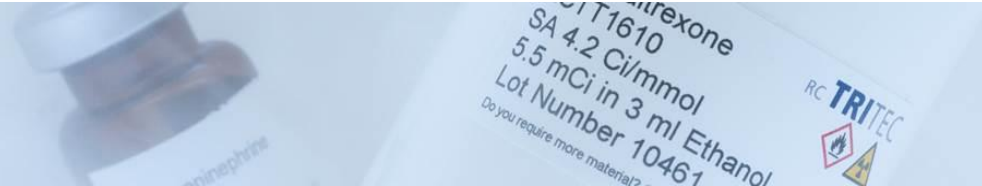


324.39 g/mol  
C<sub>20</sub>H<sub>21</sub>FN<sub>2</sub>O

## [H-3] Citalopram

**CAS-Number:** 59729-33-8

**Description:** Selective serotonin reuptake inhibitor (SSRI), blocks the serotonin transporter (SERT, 5-HTT).



- Packing/Concentration:** 1.0 mCi/ml (37 MBq/ml) in ethanol. Shipped in dry ice.
- Radiochemical Purity:** The radiochemical purity after purification was determined to be > 97%.
- Specific Activity Range:** 60-87 Ci/mmol (2220-3220 GBq/mmol)
- Stability/Storage:** The initial rate of degradation of this compound, stored as received, at temperatures below -60 °C in the dark, is currently under investigation. The decomposition of the compound is not linear or related to isotope half-life. Deviations of different lots may occur.

**Lot specific information:**

Lot Number:	08901
Specific activity:	85.3 Ci/mmol 3156 GBq/mmol
Purification Date:	15.02.2024
Day of Analysis:	15.02.2024

**Note:** The compound was isolated from the HPLC eluent under neutral conditions by solid phase extraction. The mass spectrum is consistent with the proposed structure and a non-labeled reference; the HPLC retention time is consistent with a non-labeled reference. Actual position of labels not verified. For research and development use only, not for use in humans.